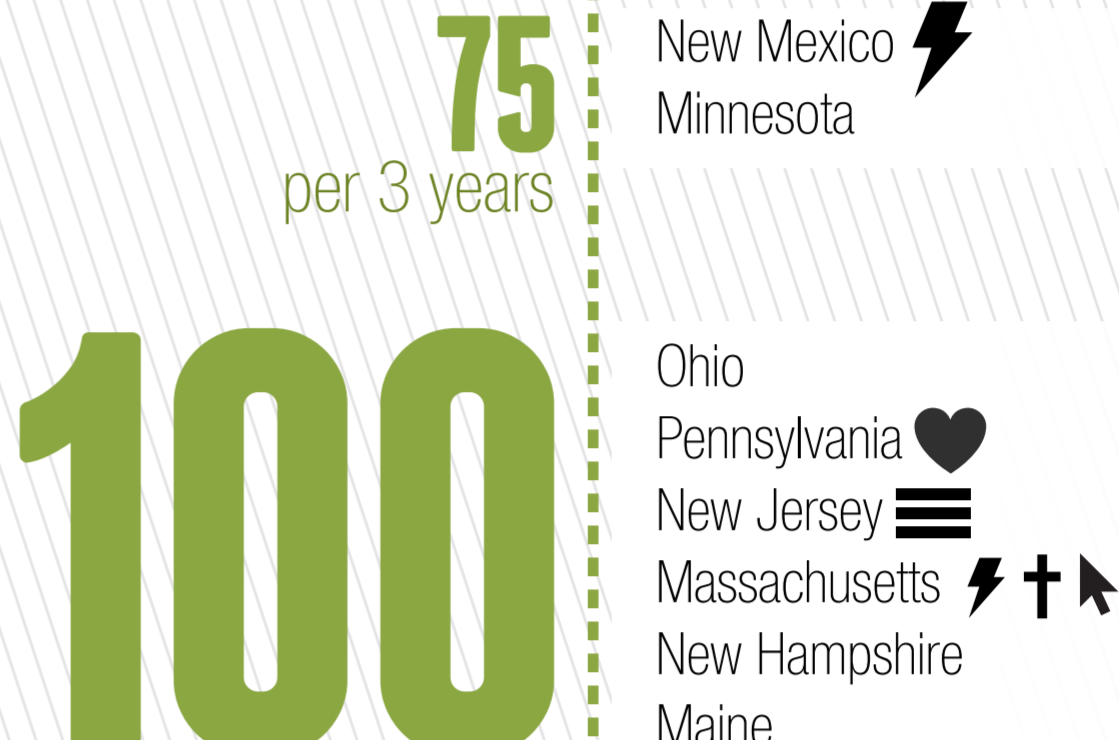
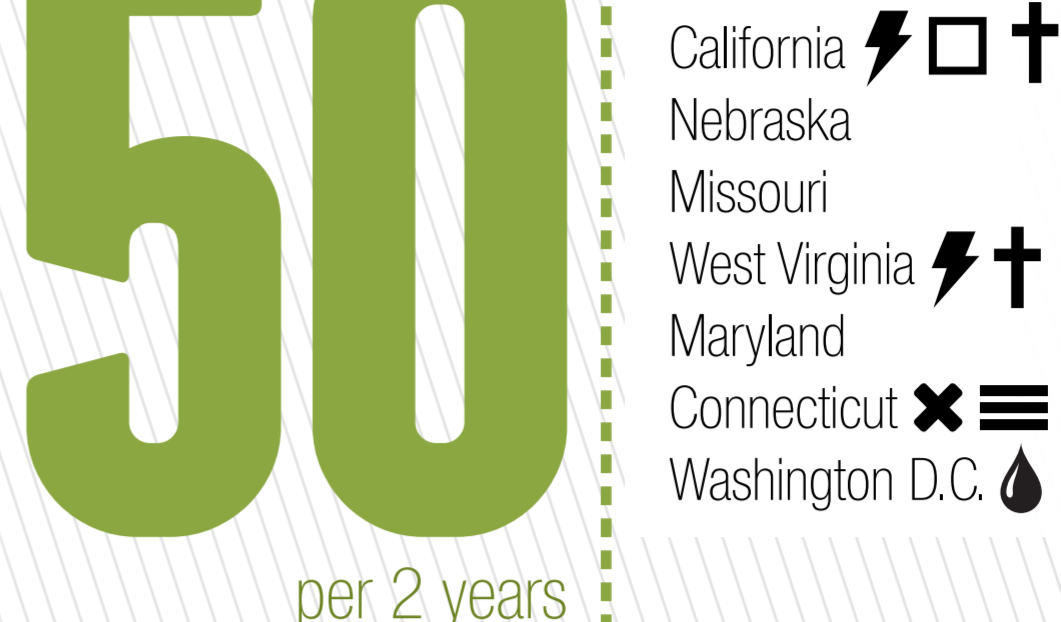
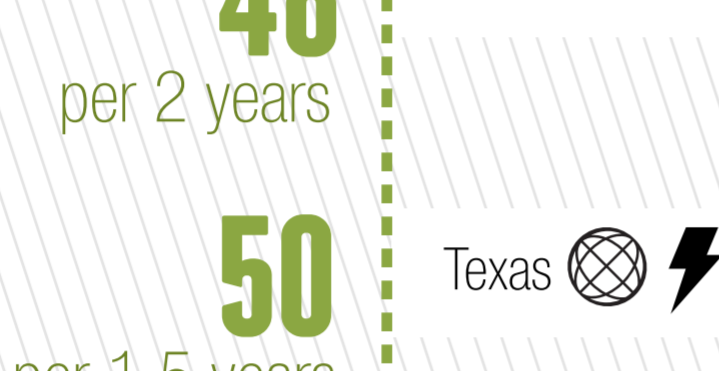
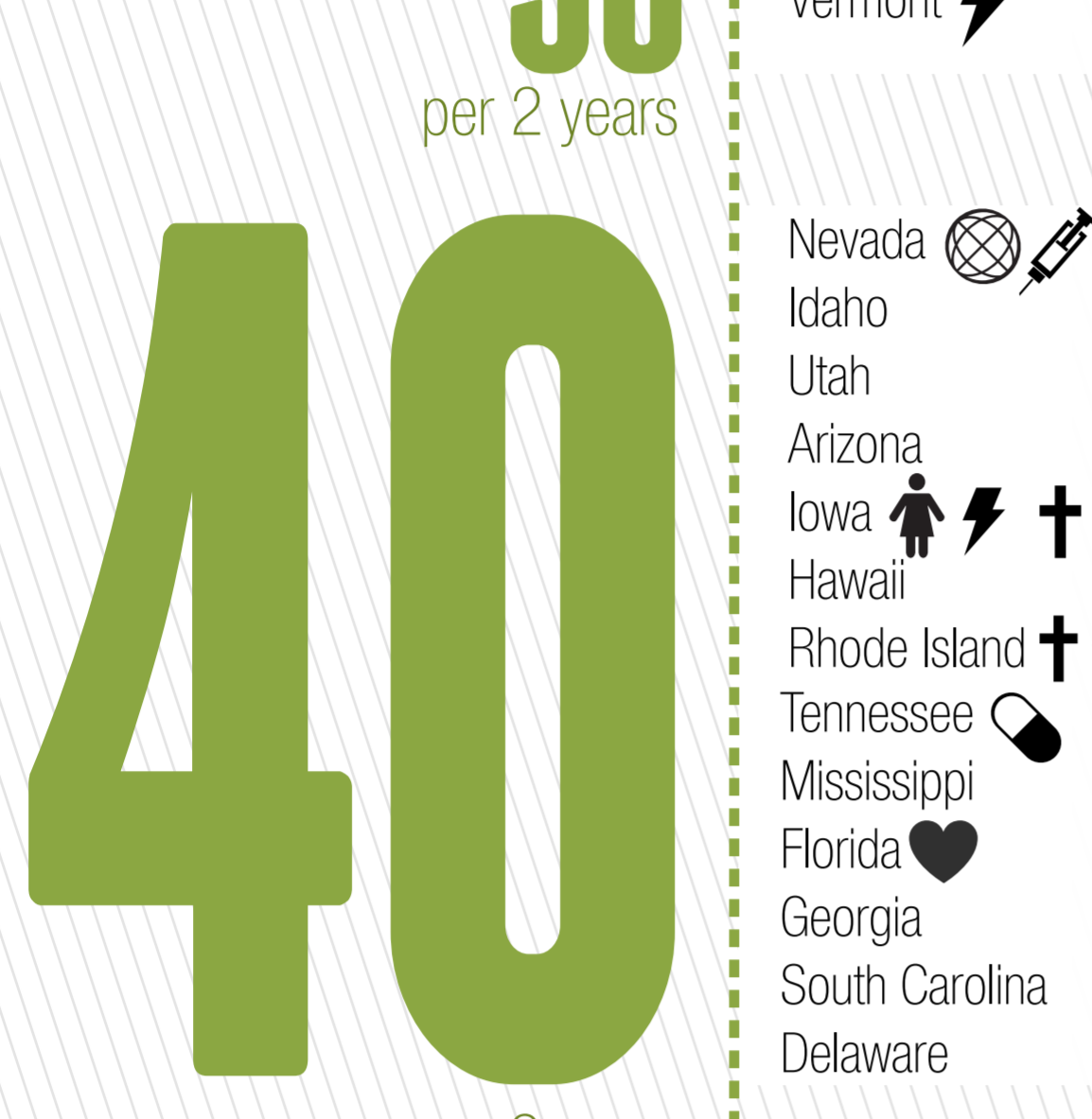
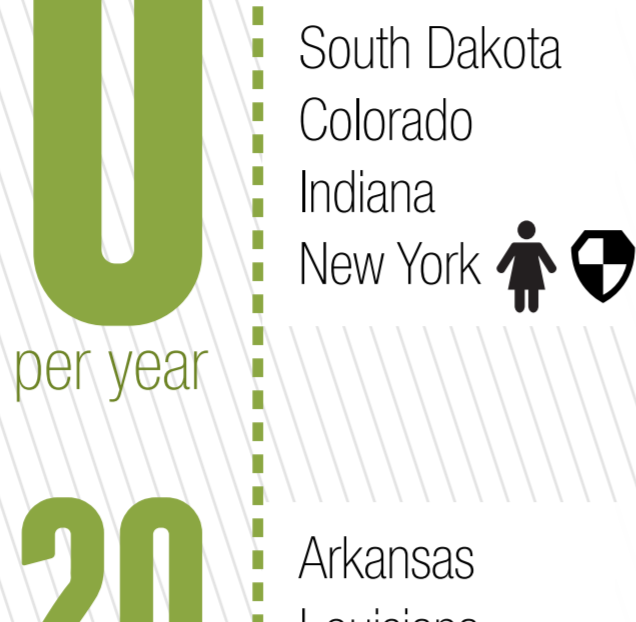




DOCTORS: DO YOU KNOW YOUR CME NUMBER?

LEARN IT, THEN EARN IT!

Completing your Continuing Medical Education (CME) state requirements shouldn't feel like brain surgery. continuingEDUCATION.com makes it easy!



STATE MANDATED CONTENT

- ⚡ Pain Management
- 👴 Geriatric Medicine
- † End-of-Life Care
- 🔍 Infectious Disease
- ⚖️ Risk Management
- ✖ Sexual Assault
- ▲ Domestic Violence
- ≡ Cultural Competence
- 👤 Child & Adult Abuse
- 💧 HIV/AIDS
- 📄 Electronic Health Records
- ⊗ Ethics
- 📌 Safe Injection Practice
- 🛡 Infection Control
- 🚫 Controlled Substance
- ❤ Patient Safety

APPROVED CME ACTIVITIES

How can a physician know if an activity is approved?

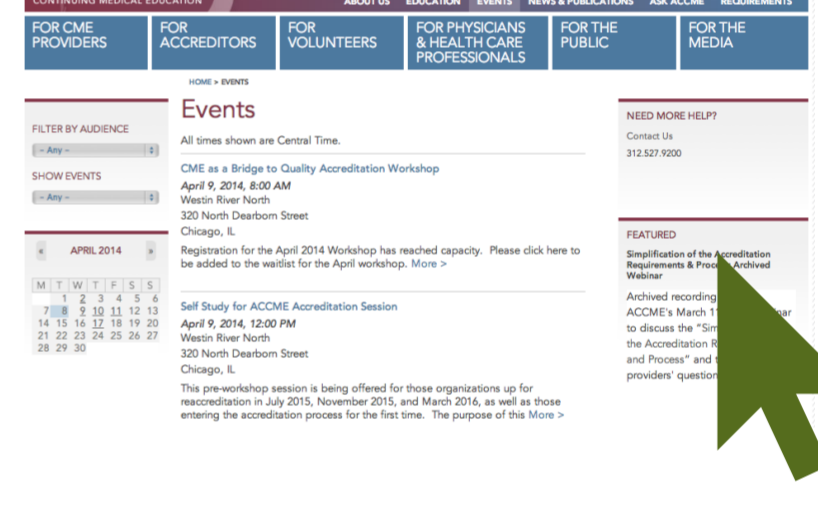
Look for the statement:

“The (name of accredited provider) is accredited by the Accreditation Council for Continuing Medical Education (ACCME) to provide continuing medical education for physicians.”

Promotional and activity materials will have the required AMA Credit Designation Statement on them.

Or

Check the List:



Physicians can search the lists of ACCME and State Medical Society accredited providers at accme.org.

What types of CME activities may be certified for AMA PRA Category 1 Credit through an accredited CME Provider?



Live Activities

May include local conferences, webinars, teleconferences, etc.



Journal-based CME

Activity in which a peer-reviewed, professional journal article is certified for publication.



Enduring Materials

Specified-time activities such as print, audio, video, Internet materials, podcasts, DVDs, etc.



Performance Improvement CME (PI CME)

Physician learns about specific performance measures in a three-stage process.



Test Item Writing

Time spent preparing questions for an NBME or AMBS exam. Must include group peer review.



Manuscript Review

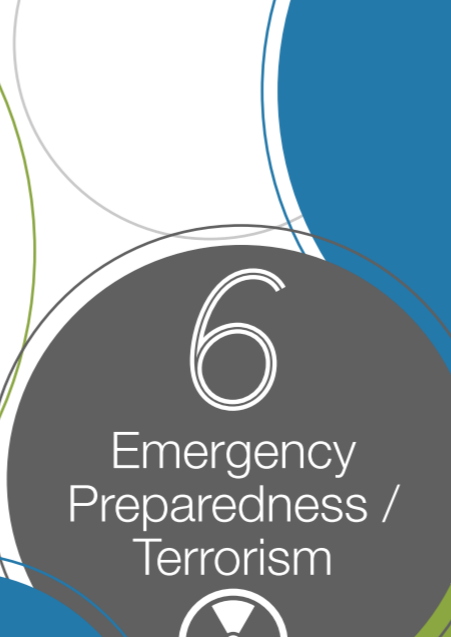
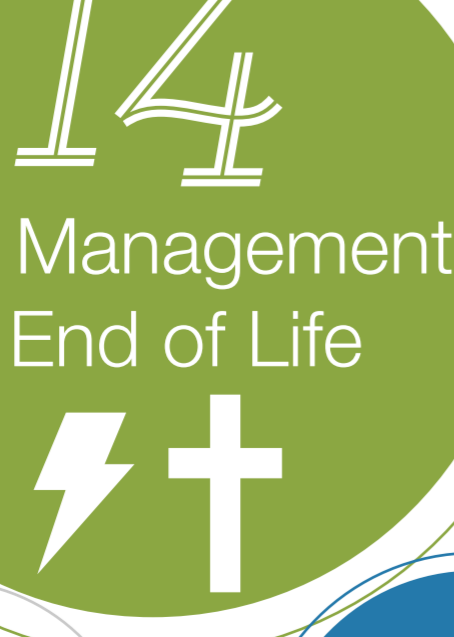
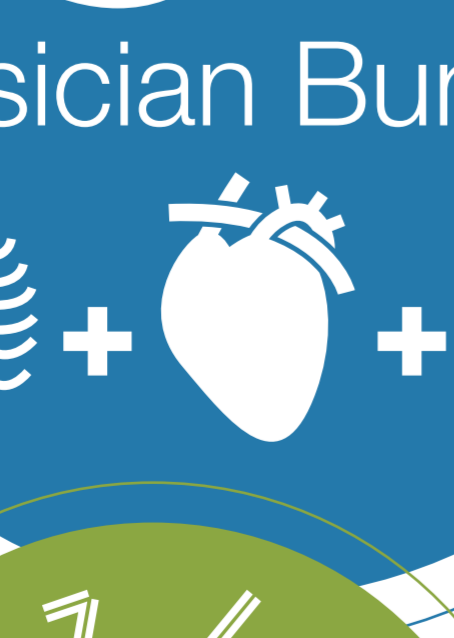
Physician learns through the critical review of the assigned journal manuscript.



Internet Point of Learning

Physician engages in self-directed, online learning topics relative to their clinical practice.

MEDICINE & SURGERY CME COURSES ON continuingEDUCATION.com



Size of circles is relative to number of courses offered.